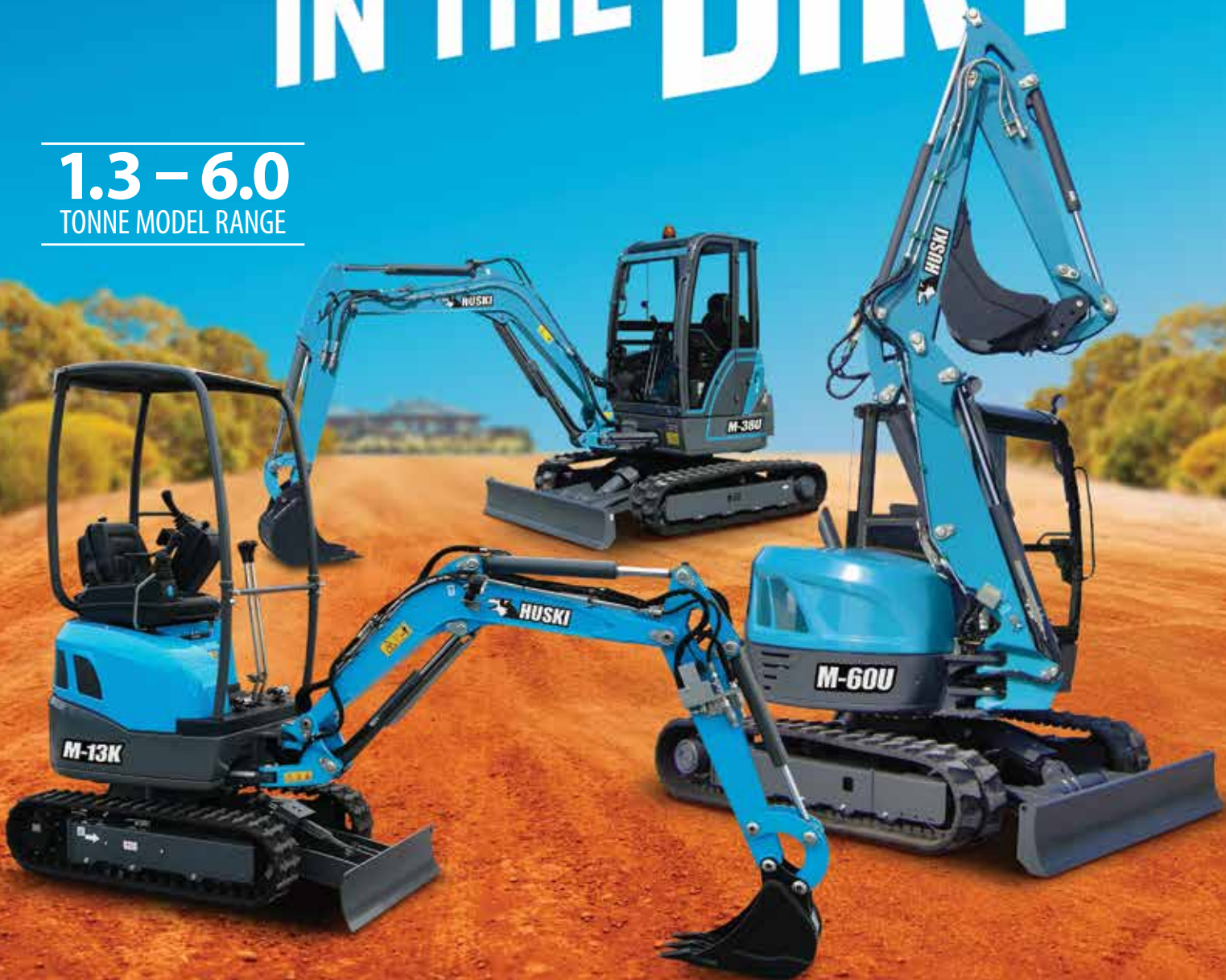


HUSKI MINI
EXCAVATORS

TOP DOG IN THE DIRT

1.3 – 6.0
TONNE MODEL RANGE



1800 425 438

huskiconstructionequipment.com.au



M-13K SHORT RADIUS MINI EXCAVATOR



M-16U ZERO TAILSWING MINI EXCAVATOR

FEATURES

- M-13K is a hydraulic mini excavator with gear pumps
- Its transportation weight is only 1350 Kg so, the M-13K is suitable to be loaded on small trucks or trailers
- Despite of its short slew radius (only 650 mm), the machine can ensure a good working stability
- M-16U is a hydrostatic mini excavator with variable displacement axial piston pump, classified as Zero TailSwing
- The variable track width (retracted crawler width of 990 mm) provides easy access to very small job sites

STANDARD EQUIPMENT

- Largest engine power in 1,5 tons category
- Travel levers and servo-controls disabling system by armrest lifting prevents accidents due to unexpected machine movement during entry or exit
- Pilot assisted controls (joy-sticks) to operate arms and buckets
- Canopy according to TOPS, FOPS
- Hydraulic Power Take-Off (P.T.O.)
- For M-13K: standard bucket of 300 mm (SAE capacity lt. 25)
- For M-16U: standard bucket of 400 mm (SAE capacity lt. 36) – two driving speed

OPTIONAL EQUIPMENT

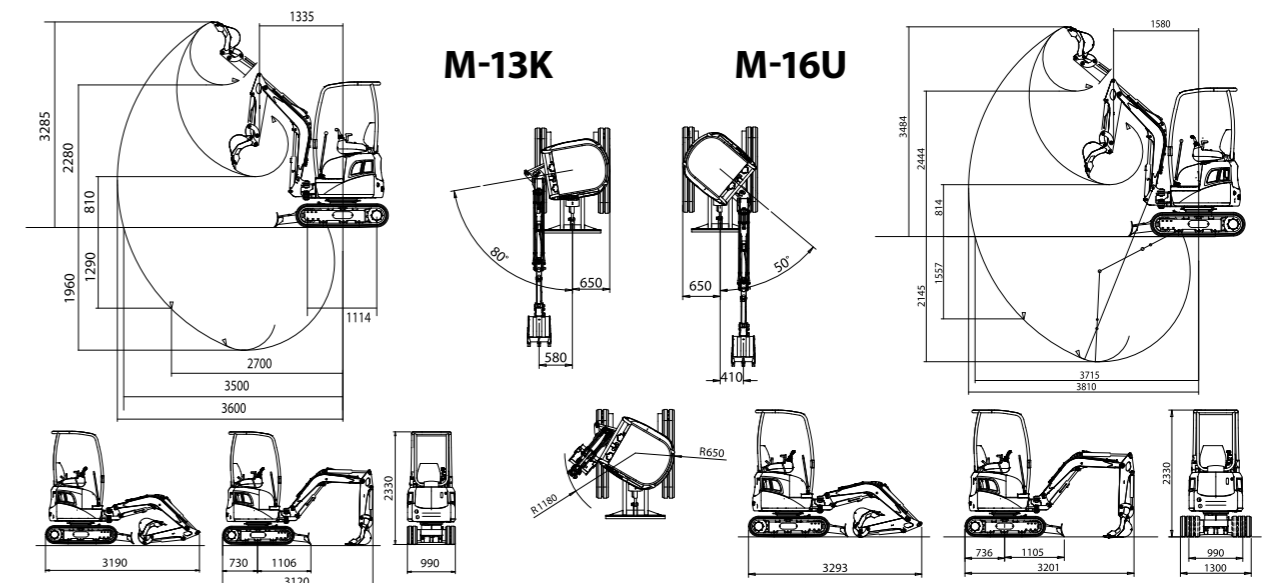
- Buckets of (mm) 250, 350, 450, 500, standard, for rocks and for Quick Hitches – Bucket for slopes, standard or swivelling
- Buckets for cleaning – Mechanical or hydraulic quick hitch
- Hydraulic breaker – Hydraulic drill/rig
- Only for M-16U: Steel Track – Long arm (extra ballast compulsory)*
- Removable roof to facilitate transport operations

TECHNICAL DATA

Model	M-13K	M-16U
ENGINE		
Engine Model	KUBOTA D902	
Max power at 3200 rpm (DIN 6271)	HP/Kw	20.4 / 15
Rated horse power at 2400 rpm	HP/Kw	19 / 14
Cylinders	N°	3
Displacement	cm ³	898
Cooling	Water	
Battery	N°	1 – 12 V – 44 Ah

Model	M-13K	M-16U
HYDRAULIC SYSTEM		
Hydrostatic transmission with orbital motors and planetary reduction gears with negative brakes		
Travelling counter-balance valves		
N. 2 gear pumps	Lt/min	15x2
N. 2 variable displacement piston pump + gear pump	Lt/min	22x2+15
Total delivery	Lt/min	30 59
Auxiliary hydraulic flow for P.T.O	Lt/min	30 36
Max working pressure	Bar	180 200 / 180
Slew speed (with orbit motor)	RPM	9.5 11.7
Boom, arm, bucket and slew actuated by servo-controlled joysticks.		
Mechanical levers to control track, pedals to control boom swing and P.T.O.		
Lever to control dozer blade		
Heat exchanger for oil cooling		
UNDERCARRIAGE		
Box section steel frame		
Track type and width	mm	Rubber 200 Rubber 230
Track bearing rollers	N°	3+3 low/guide block
Track tensioning	adjusting screw	grease
Dozer blade	mm	250x990 250x1295
PERFORMANCES		
Shipping weight	Kg	1350 1530
Operating weight	Kg	1420 1600
Break out force	daN	1200 1605
Digging force	daN	800 895
Travel speed	Km/h	1.8 2.0 / 2.7
Max gradient capacity	Over %	100 100
Specific ground pressure	Kg/cm ²	0.285 0.276
REFUELLING		
Fuel tank capacity	Lt	20
Hydraulic oil tank capacity	Lt	19

DIMENSIONS & PERFORMANCES (MM)





M-22U
ZERO TAILSWING
MINI EXCAVATOR

FEATURES

- Design with the tail always remaining within the width of the tracks (Zero TailSwing)
- Engine complies to the norm 97/68/EC Stage2 relevant to the polluting emissions
- Straight travel circuit, electrically engaged, for simultaneous operation of travel and front digging attachment
- Two track speed via axial piston motors with two different displacements to increase travelling speed
- Automatic level lock when armrest is lifted

STANDARD EQUIPMENT

- Canopy/Cab according to TOPS-FOPS norms
- Standard bucket of 400 mm (SAE capacity Lt. 60)
- Electrically operated second travelling speed
- Mt 1.00 dipper stick • Regenerative valve on dipper stick

OPTIONAL EQUIPMENT

- Buckets of (mm) 250, 300, 350, 450, 500 standard, for rocks and for Quick Hitches
- Buckets for slopes standard, swivelling or for cleaning
- Mechanical or hydraulic Quick Hitches
- Hydraulic breaker • Hydraulic manual breaker
- Hydraulic drill
- Grass-bush cutter
- Steel tracks
- Closed cab with heating system (FOPS TOPS norms)
- Digging arm of 1.2 mt

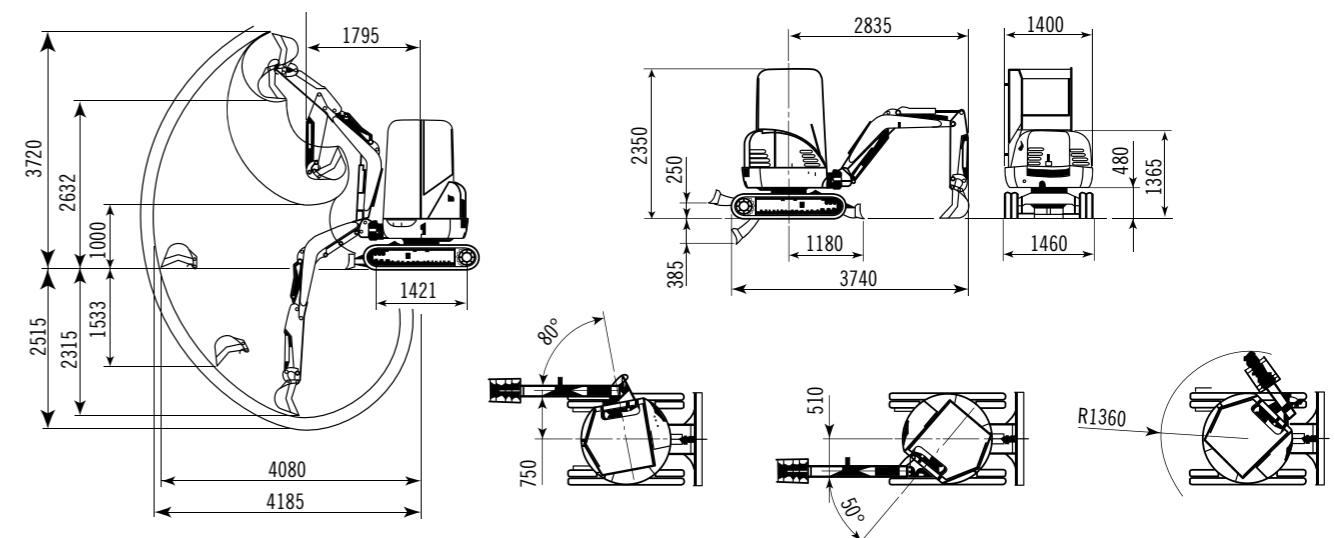
TECHNICAL DATA

Model		M-22U
ENGINE		
Engine Model	KUBOTA D1105-E3B	
Max power at 2500 rpm (DIN 6271)	HP/Kw	23.7 / 17.5
Horse power at 2500 rpm	HP/Kw	23.5 / 17.5
Cylinders	N°	3
Displacement	cm ³	1123
Cooling	Water	
Battery	N°	1 - 12V - 60Ah

Model		M-22U
UNDERCARRIAGE		
Box section steel frame		
Track type and width	mm	Rubber 250
Track bearing rollers	N°	4+4 low + guide block
Track tensioning	Grease	
Dozer blade	mm	240 x 1460
HYDRAULIC SYSTEM		
Hydrostatic transmission with axial piston motors and planetary drives with negative control brakes		
Driving counter-balance valves		
Main axial pistons pump with variable displacement + gear pump	Lt/min	21.8 x 2 + 15.5
Total delivery	Lt/min	59.1
Auxiliary hydraulic flow for P.T.O	Lt/min	37.3
Max working pressure	Bar	230 / 200
Slew speed (with hydraulic motor and negative control brake)	g/min	10.0
Boom, arm, bucket and slew actuated by servo-controlled joysticks.		
Proportional servo-controlled rollers on the joy-sticks for the boom swing and the single and double effect P.T.O.		
Levers to control track and dozer blade		
Heat exchanger for oil cooling		
PERFORMANCES		
Shipping weight with canopy	Kg	2025
Operating weight with canopy	Kg	2100
Break out force	daN	1850
Digging force	daN	1410 / 1235
Travel speed	Km/h	2.2 / 4.0
Max gradient capacity	Over %	100
Specific ground pressure	Kg/cm ²	0.289
REFUELLING		
Fuel tank capacity	Lt	30
Hydraulic oil tank capacity	Lt	28

DIMENSIONS & PERFORMANCES (MM)

M-22U



M-28U

ZERO TAILSWING MINI EXCAVATOR



M-38U

ZERO TAILSWING MINI EXCAVATOR

FEATURES

- Innovative design with the tail always remaining within the width of the tracks (Zero TailSwing)
- Fully servo-controlled machine: the boom swing and the P.T.O. are controlled by rollers on the joy-stick (no pedals in the cab)
- Straight travel contemporary with all arms/bucket manoeuvring
- Rollers and idler wheels with rolling bushing for a remarkable increasing in the traction and life time performances
- Gear motors shift automatically from the second to the first speed (AUTO TWO SPEED)

STANDARD EQUIPMENT

- Canopy according to TOPS-FOPS norms
- Standard bucket of 450 mm (SAE capacity Lt. 64)
- 2-speeds travel electric switch
- Hydraulic Power Take-Off (P.T.O.)
- Oil recovering system on dipstick ram
- For M-28U 1200 mm. Long dipstick
- For M-38U 1350 mm. Long dipstick

OPTIONAL EQUIPMENT

- Buckets of (mm) 250, 350, 450, 500, standard, for rocks and for Quick Hitches – Bucket for slopes, standard or swivelling
- Buckets for cleaning • Hydraulic breaker • Hand breaker
- Hydraulic drill • Grass-bush cutter • Steel tracks
- Cab with heating according to TOPS norms • Air conditioning
- Tilting dozer blade
- For M-28U 1500 mm longer arm (200 Kg extra ballast compulsory)
- For M-38U 1700 mm longer arm

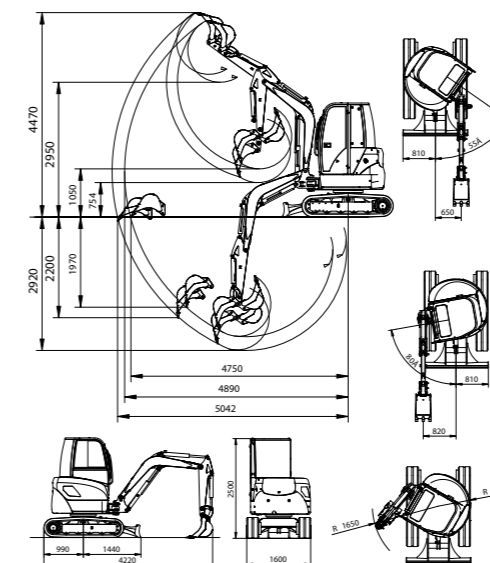
TECHNICAL DATA

Model	M-28U	M-38U
ENGINE		
Engine Model	KUBOTA D1703M	
Max power at 2800 rpm (DIN 6271)	HP/Kw	37.2 / 27.4
M-28U Rated power at 2200 rpm	HP/Kw	34 / 25
M-38U Rated power at 2400 rpm	HP/Kw	36 / 26.5
Cylinders	N°	3
Displacement	cm ³	1647
Cooling	Water	
Battery	N°	1 – 12 V – 80 Ah

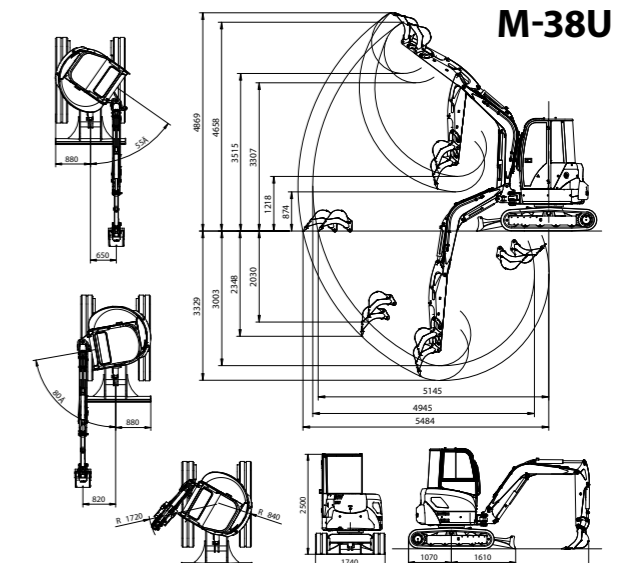
Model	M-28U	M-38U
HYDRAULIC SYSTEM		
Hydrostatic transmission with orbital motors and planetary reduction gears with negative brakes		
Travelling counter-balance valves		
N. 2 variable displacement piston pumps + gear pump	Lt/min	32.5 x 2 + 26.5 35.4 x 2 + 28.9
Total delivery	Lt/min	91.5 100
Auxiliary hydraulic flow for P.T.O	Lt/min	59 64.5
Max working pressure	Bar	250 / 230
Slew speed (with piston motors & negative brake)	RPM	9.0 10.0
Boom, arm, bucket and slew actuated by servo-controlled joysticks.		
Proportional servo-controlled rollers on the joy-sticks for the boom swing and the single and double effect P.T.O.		
Lever to control track and dozer blade		
Heat exchanger for oil cooling		
UNDERCARRIAGE		
Box section steel frame		
Track type and width	mm	Rubber 300
Track bearing rollers	N°	4+4 low / 1+1 up
Track tensioning	Grease	
Dozer blade	mm	300x1620 310x1760
PERFORMANCES		
Shipping weight with canopy	Kg	2750 3350
Operating weight with canopy	Kg	2850 3450
Shipping weight with cab	Kg	2900 3500
Operating weight with cab	Kg	3050 3600
Break out force	daN	2620 3100
Digging force	daN	1725 1950
Travel speed	Km/h	2.4 / 4.3 2.2 / 4.3
Max gradient capacity	Over %	100 100
Specific ground pressure	Kg/cm ²	0.28 0.328
REFUELLING		
Fuel tank capacity	Lt	35
Hydraulic oil tank capacity	Lt	56

DIMENSIONS & PERFORMANCES (MM)

M-28U



M-38U



M-55U ZERO TAILSWING MINI EXCAVATOR



M-60U ZERO TAILSWING MINI EXCAVATOR

FEATURES

- Innovative design with the tail always remaining within the width of the tracks (Zero TailSwing)
- Suspension and adjustable operator's seat increases productivity by providing optimum comfort
- Travel levers and servo-controls disabling system by armrest lifting prevents accidents due to unexpected machine movement during entry or exit
- Pilot assisted controls (joy-sticks) to operate arms and buckets

STANDARD EQUIPMENT

- Cab with heating system according to TOPS norms
- Standard bucket of 600 mm (SAE capacity Lt. 157)
- 2-speeds travel electric switch
- Hydraulic Power Take-Off (P.T.O.)
- Automatic transmission system
- Monoboam on M-55U
- Articulated boom and extra-ballast on M-60U

OPTIONAL EQUIPMENT

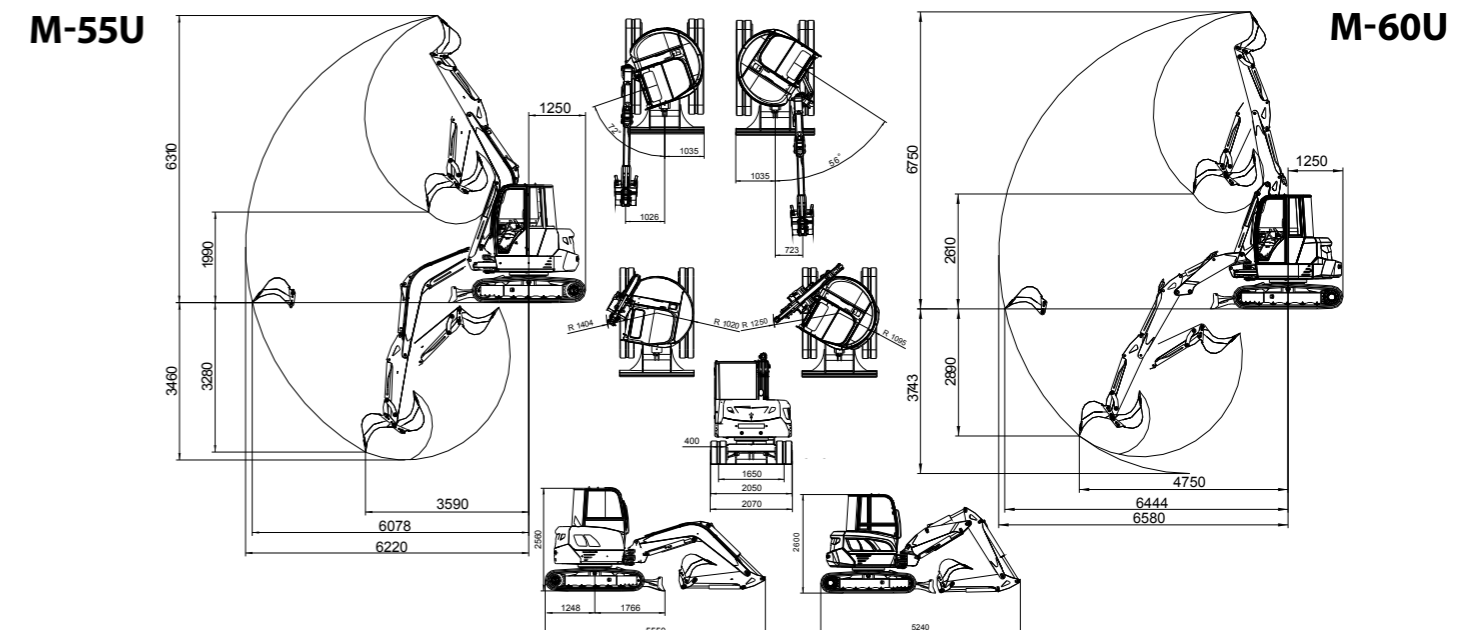
- Buckets from 300 – 1000 mm standard, for rocks and for Quick Hitches – Bucket for slopes, standard or swivelling
- Buckets for cleaning • Hydraulic breaker • Hand breaker
- Mechanical or hydraulic Quick Hitches
- Hydraulic drill • Grass-bush cutter • Steel tracks
- 1850 mm longer arm • Air conditioning

TECHNICAL DATA

Model	M-55U	M-60U
ENGINE		
Engine Model	KUBOTA V2403M-T TURBO	
Max power at 2700 rpm (DIN 6271)	HP/Kw	59 / 44
Rated horse power at 2200 rpm	HP/Kw	52 / 38
Cylinders	N°	4
Displacement	cm ³	2434
Cooling	Water	
Battery	N°	1 – 12 V – 105 Ah

Model	M-55U	M-60U	
HYDRAULIC SYSTEM			
Hydrostatic transmission with piston motors and planetary reduction gears with negative brakes and automatic shift			
Travelling counter-balance valves			
N. 2 variable displacement piston pumps + N. 1 gear pump	Lt/min	60 x 2 + 45	
Total delivery	Lt/min	165	
Auxiliary hydraulic flow for P.T.O	Lt/min	105	
Max working pressure	Bar	250 / 220	
Slew speed (with piston motors & negative brake)	RPM	9.0	
Hydraulic servo-controlled joystick to operate bucket, arms, slew			
Hydraulic servo-controlled pedals for driving, off-setting and simple/double effect P.T.O			
Lever control for the refilling blade			
Combined radiator for water and oil			
UNDERCARRIAGE			
Track type and width	mm	Rubber 400	
Track bearing rollers	N°	5+5 low / 1+1 up	
Track tensioning	Grease		
Dozer blade	mm	370 x 2070	
PERFORMANCES			
Shipping weight	Kg	5100	5600
Operating weight	Kg	5250	5750
Break out force	daN	3970	
Digging force	daN	2900	
Travel speed	Km/h	2.7 / 4.7	
Max gradient capacity	Over %	100	
Specific ground pressure	Kg/cm ²	0.330	
REFUELLING			
Fuel tank capacity	Lt	80	
Hydraulic oil tank capacity	Lt	50	

DIMENSIONS & PERFORMANCES (MM)



OTHER CONSTRUCTION EQUIPMENT SOLUTIONS

HUSKI SKID STEER LOADERS

Toyota Huski skid steer loaders have long been renowned as the finest available.

Strength, high performance and reliability have become synonymous with the Huski range.

Developed and tested in Australia, the Huski 5SDK skid steer loader range features exceptional stability, driver comfort and safety. The soft touch control ensures smooth transition of the lever, allowing for precise manoeuvrability.

The 5SDK skid steer loader range also provide owners with a product offering heavy-duty construction, low running costs and a longer machine life, adding true value to our customer's business.



4SDK4 320kg OPERATING LOAD

The Toyota Huski 4SDK4 skid steer loader is compact in size, yet powerful enough to handle the toughest job. Its compact size make limited access applications possible. The option of wide tyres takes the machine up to a metre in width, creating wider cutting width.

5SDK5 430kg OPERATING LOAD

The Toyota Huski 5SDK5 skid steer loader is a quick powerful machine, capable of performing all the tasks of the bigger machines, yet compact enough to fit in confined spaces. It provides outstanding operator comfort and machine performance, with easy to operate control levers and a rugged frame for the toughest of jobs.

5SDK8 650kg OPERATING LOAD

Built for the job and made for the operator, the Toyota Huski 5SDK8 skid steer loader has a spacious cabin opening for smooth entry and exit, along with an easy to read instrument panel and low vibration and low fatigue control levers, provide outstanding operator comfort. Class leading visibility and outstanding manoeuvrability makes the 5SDK8 skid steer loader a valuable addition to any worksite.

5SDK9 730kg OPERATING LOAD

The 5SDK9 skid steer loader offers operators class leading levels of steering and operator control, with performance geared to meet the most demanding applications. An optional high flow system available on the 5SDK9 skid steer loader operates most high-flow attachments requiring flows of up to 100 litres per minute, all packaged in a tough Toyota body for outstanding performance you can rely on.

5SDK10 820kg OPERATING LOAD

One of the largest machines in the Toyota Huski family, the 5SDK10 skid steer loader has earned a reputation for being one of the toughest skid steer loaders available. With effortless power to perform the larger earthmoving tasks efficiently, all with outstanding speed and accuracy. The 5SDK10 skid steer loader also features an arm structure that allows the bucket to lift almost vertically, making possible smooth operation even in enclosed areas.

5SDK11 900kg OPERATING LOAD

With a powerful 900kg operating load capacity makes the 5SDK11 skid steer loader the ideal machine for the most demanding of applications, providing you with toughness coupled with pin-point precision, all at your complete control. Like the 5SDK10 skid steer loader, the 5SDK11 skid steer loader also offers vertical arm lift operation, helping to improve stability and easier dumping operability.



HUSKI SCISSOR LIFTS

The Huski E-Series Scissor Lift is one of the most versatile tools on the market. Designed for facilities maintenance, installation, construction, and more it has working heights of up to 9.78m and the capability to fit through a doorway, the manoeuvrable and agile E-Series Scissor Lift is a dependable tool for many tasks.

With steel-constructed panels and powder-coated paint make the E-Series Scissor Lifts built to last. The extendable platform allows operators to safely reach across fixed objects while the tilt alarm alerts operators to unsafe working conditions and limits platform movement until safe operation is restored. The folding guardrails allow for larger models to pass through doorways and under other low obstacles while the operator is off the scissor lift.

The dual operational mode provides increased platform capacity at lower heights for flexible use, while the upper control box offers two mounting positions or remote use while off the scissor lift.



SV06ENS

Platform Height
5.72m

Load Capacity
230kg

SV06ENL

Platform Height
6.10m

Load Capacity
360kg

SV08ENL

Platform Height
7.77m

Load Capacity
360kg

SV08EWL

Platform Height
7.92m

Load Capacity
450kg

SV10EWL

Platform Height
9.68m

Load Capacity
450kg

HUSKI MINI EXCAVATORS

1.3 – 6.0 TONNE MODEL RANGE

Toyota Material Handling's range of Huski mini excavators represent excellent reliability and are stacked with operator features. The range consists of seven models including one 1.3-tonne short-radius machine and six zero tail swing models ranging from 1.6-tonne through to 6-tonne. Fundamental to the Huski mini excavators' robust construction and functional design is excellent quality-of-materials, high technological content of components and the strict inspection of production and assembly processes.

The Huski mini excavators come generously equipped as standard with many options also available. Additionally, the zero tail-swing functionality means the unit can swing 360 degrees within the total width of its chassis and the machine tail doesn't protrude past the width of the machine's undercarriage.

ABOUT TOYOTA MATERIAL HANDLING

For over sixty years, Toyota has been at the forefront of the global industrial equipment market. Drawing on extensive experience gained in advanced automotive engineering and technology, Toyota Material Handling has become one of the global leaders in the production and distribution of material handling equipment.

HUSKI SUPPORT FOR STAYING ON TOP

At Toyota Material Handling, we recognise how important after-sales support is to your business to keep your Huski running. Our reputation may be global, but local service is our top priority.

Our commitment to total customer satisfaction extends nationwide thanks to one of the finest branch networks in Australia. We have major outlets for Toyota Material Handling Huski sales, service and parts located in every state and territory of Australia.

PRODUCTS IN THE TOYOTA MATERIAL HANDLING RANGE:



Toyota Material Handling Australia (TMHA) has used its best endeavours to ensure brochure information is correct when published. All images are used for illustration purposes only and actual colour of products may differ from images displayed. TMHA, to the extent permissible at law, is not liable to any person for loss or damage arising from reliance upon information contained in this brochure. Distributed nationally by Toyota Material Handling Australia Pty Limited ABN 38 104 644 635. 8 Secombe Place Moorebank NSW 2170. Printed March 2020.



1800 425 438
huskiconstructionequipment.com.au

